

# UTSCI Install Utility

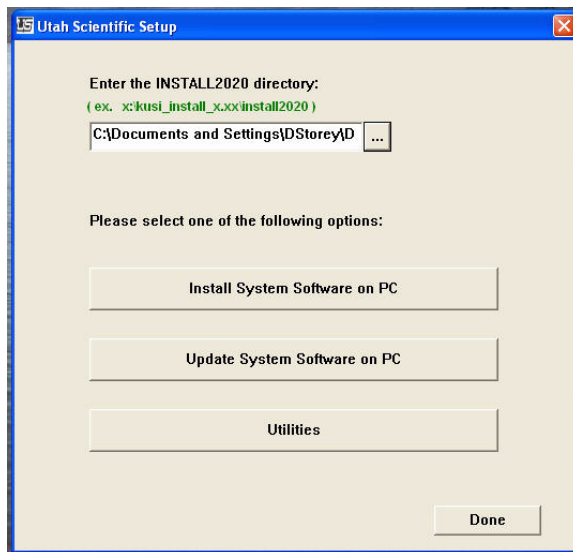
## Introduction

Utah Scientific's graphical installation interface for system setup is designed to streamline most of the previous setup and maintenance functions. Using one simple dialog, you can perform software installation and system upgrades for any component in your operation.

## Directory Definition

First, copy the UTSCI setup directory from the system CD (you received) to its own directory on your configuration PC. When complete, run the *pcprep.bat* file (new directory on the PC). This will place a shortcut called **UTSCI Install Utility** on your desktop.

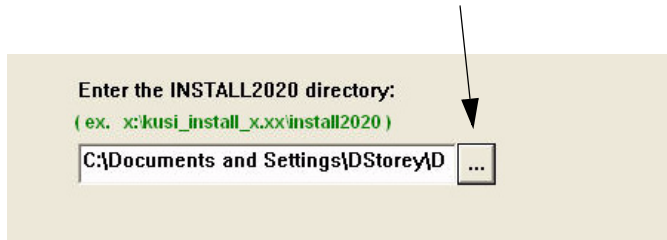
The program's setup window will appear when you launch the utility.



If you see a dialog indicating "... the USI Device type.dat file will not open...", when initially clicking either *Install* or *Update System Software*, you will need to designate the proper directory for the Install 2020 program.

Designation of the Install2020 file location is necessary for proper file maintenance during the install/update process. The current Install2020 directory is recognized as the system default.

Use the top drop-down menu to make this designation.



The Install 2020 directory and program will reside at the location (previously copied) on your PC.

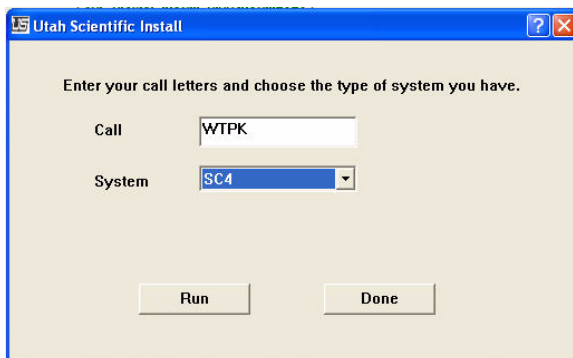
It should be noted that whenever subsequent updates or modifications are required (when customer service provides specific updates), the user would need make the correct directory designation at this location. If the correct directory for the Install 2020's location is not designated, the program will prompt with a dialog. The dialog will indicate the system's inability to locate the proper file/directory.

This location will vary since Customer Service will periodically provide updates whose directory location varies. You should always make sure the correct directory is designated, especially in situations where a specific update is designated.

The default designation is for ALL devices. Alternatively, you can indicate the specific chassis for updating. Typically ALL is indicated.

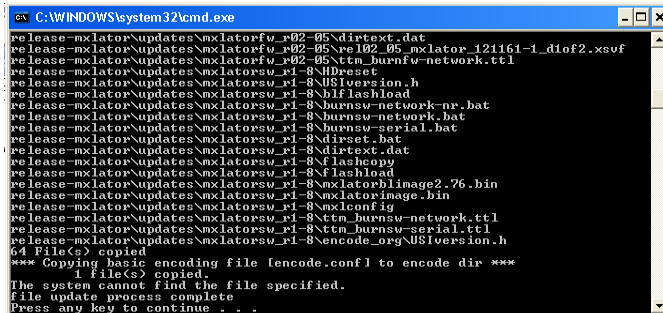
## Running the Installation

Provide your system name (or *Call Letters*) and *System Type* that you would like to add to the USI folder.



*Note: The 'System' is typically the SC-4 during an initial installation.*

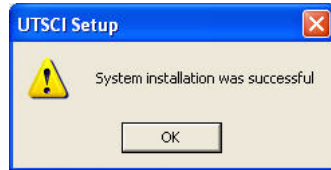
Click **Run** to continue. A DOS window will appear containing file load activity. (This activity will continue for several seconds.)



```

C:\WINDOWS\system32\cmd.exe
release-mxlator\updates\mxlatorfv_v02-05\dirtext.dat
release-mxlator\updates\mxlatorfv_v02-05\re102_05_mxlator_121161-1_diof2.xsvf
release-mxlator\updates\mxlatorfv_v02-05\etm_burnfv-network.ttl
release-mxlator\updates\mxlatorsv_v1-8\IDreset
release-mxlator\updates\mxlatorsv_v1-8\IS1overion.h
release-mxlator\updates\mxlatorsv_v1-8\if1ashload
release-mxlator\updates\mxlatorsv_v1-8\burnsv-network-nr.bat
release-mxlator\updates\mxlatorsv_v1-8\burnsv-network.bat
release-mxlator\updates\mxlatorsv_v1-8\burnsv-serial.bat
release-mxlator\updates\mxlatorsv_v1-8\lineset.bat
release-mxlator\updates\mxlatorsv_v1-8\dirtext.dat
release-mxlator\updates\mxlatorsv_v1-8\1ashcopy
release-mxlator\updates\mxlatorsv_v1-8\1ashload
release-mxlator\updates\mxlatorsv_v1-8\mxlatorhimage2.76.bin
release-mxlator\updates\mxlatorsv_v1-8\mxlatorimage.bin
release-mxlator\updates\mxlatorsv_v1-8\mxconf.fg
release-mxlator\updates\mxlatorsv_v1-8\etm_burnsv-network.ttl
release-mxlator\updates\mxlatorsv_v1-8\etm_burnsv-serial.ttl
release-mxlator\updates\mxlatorsv_v1-8\encode.org\US1version.h
64 File(s) copied
*** Copying basic encoding file fencode.conf1 to encode dir ***
1 file(s) copied.
The system cannot find the file specified.
File update process complete
Press any key to continue . . .
  
```

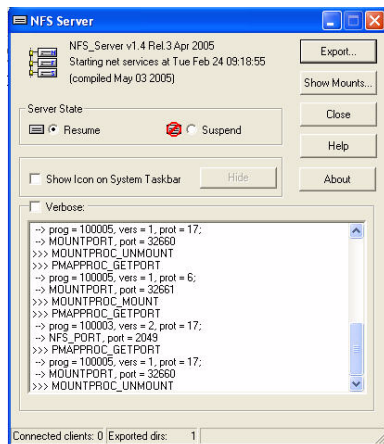
The program will indicate a successful installation when complete.



Clicking **OK** will return you to the Install dialog where you can perform additional installations (entering the call letters and system name), or continue to Updates and Utilities by clicking **Done**.

## System Updates

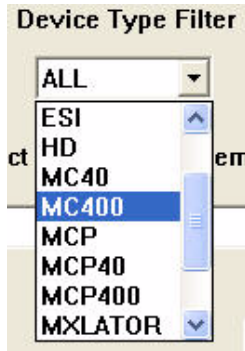
Prior to performing any system updates, make sure the NFS Server application is running. The dialog window will look like this:



The NFS Server must be running during 'Utilities' operation. You will only be prompted for its activation when the Utilities button is clicked.

## Device Type Filter

Drop-down menu for selecting among the current chassis within your system.



When a specific device is indicated from this drop-down menu, all components applicable to this selection will appear within the 'Selection drop-down' immediately below.

## System to Update

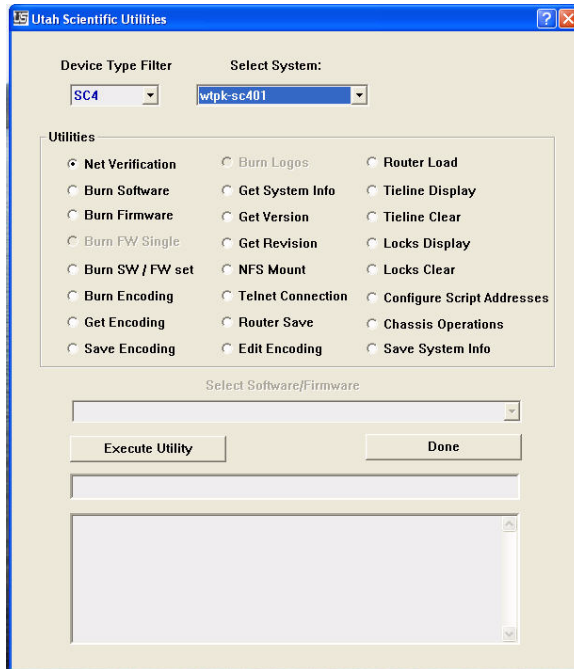
Once the directory information for a given component has been installed on your hard drive (*SC-4, Master Control, MX-Lator, etc.*), an update batch file is placed within a *Updates* directory, inside your system's *USI* folder. The folder name will correspond with the installed component, such as *SC-4, Master Control, MX-Lator, etc.* This will update the current folder with new updates while leaving the original folder in place.

As previously mentioned, you must run the *Install2020* utility, located on the System Installation CD (*Install 2020* folder). This will indicate the specific component, or 'system type', to be installed in the utility's drop-down menu.

System Updates simply place new software and firmware information within a directory on your PC's hard drive, without actually committing the detail to the system's components.

## Utilities

The primary function of this section is to run system batch files. All necessary batch files are selectable from this location. Once the coordinates are indicated from the drop-down menus, applicable radio buttons become active for the given parameters.

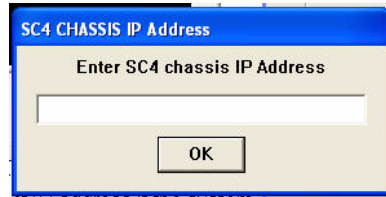


It is always a good idea to verify versions and addresses prior to any system updating.

Once an IP address is designated (earlier in the operation), the program will prompt you whether or not you would like that address detail saved for future operations. In this case you would not be continually prompted for your IP address during subsequent maintenance operations.

This prompting occurs during the initial program operation.

You may be prompted to designate the correct IP address if the system does not recognize one by default.



The program will alert you when any operation is invalid or not applicable. In addition, the program will activate a warning when there is any attempt to abort an operation prior to completion.

## **Batch File Selection**

Note that there are certain functions (such as software burning) that cannot be completed until another function (version selection) takes place.

The single-line display provides shorter, immediate activity relation to the operation. This allows the last selected status to remain on-screen indefinitely, until another action is selected or the program is closed.

The larger pop-out dialog window contains more comprehensive detail related to the selected operation

## ***Net Verification***

This utility provides verification for network communications between the PC and the USI target device, such as a SC-4.

## ***Burn Software***

This utility updates the flash memory of a USI target device, such as a SC-4 Router Controller.

## ***Burn Firmware***

This utility updates the programmable logic devices (FPGA's) of a USI target device, such as a SC-4 Router.

## ***Burn SW / FW Set***

This utility updates a USI target device with new software and firmware that are known to work together.

## ***Burn Encoding***

This utility updates a USI target device with encoding stored in a file on the local PC hard drive.

## ***Get Encoding***

This utility downloads encoding information from a USI target device and stores it in a file on the local PC hard drive.

### **Save Encoding**

This utility copies the encoding stored on the local hard drive to the windows desktop.

### **Burn Logos**

This utility updates the flash memory of the USI master control devices, replacing existing files with new ones stored on the local PC hard drive.

### **Get System Info**

This utility generates a detailed report for a USI target device and stores it to a file on the local PC hard drive, which is typically sent to USI Customer Service. *Use the Save System Info utility to copy the file to your desktop for easy access.*

### **Get Version**

This queries a USI target device for its current software version and displays it in the message window.

### **Get Revision**

This queries a USI target device for its current software revision, Firmware revision, and board inventory, then displays the information in the terminal window.

### **NFS Mount**

This opens a telnet terminal and causes a USI target device to map the local PC hard drive as a remote drive, allowing access to files stored on the local PC hard drive.

### **Telnet Connection**

This utility allows a convenient telnet connection to a USI target device.

### **Router Save**

This updates a USI router controller with a file generated with the Router Save utility. This effectively returns the router control system status to a previous state.

### **Edit Encoding**

This opens the encoding file for a USI target device stored on the local PC hard drive using Wordpad. You can then easily make file changes.

### **Router Load**

This updates a USI router controller with a file generated with the Router Save utility. This effectively returns the router control system status to a previous state.

### ***Tieline Display***

This opens a telnet terminal and displays the current tieline status on the terminal screen.

### ***Tieline Clear***

This utility clears out all tieline controls, essentially resetting the Tieline processing engine in a USI router controller.

### ***Locks Display***

This opens a telnet terminal and displays the current lock status for a USI router system controller.

### ***Locks Clear***

This utility removes all active locks in a USI router control system.

### ***Configure Script Addresses***

This utility allows the user to enter or modify the IP addresses used by the utilities on the Local PC hard drive. This does not modify the IP address in a USI target device. That must be done using the Chassis Ops utility.

### ***Chassis Operations***

This utility allows the user to modify various settings in a USI target device, including the IP address, Chassis Name, Customer Name, and UNET node #

### ***Save System Info***

This utility copies the system information report generated with the Get System Info utility to the Windows desktop for easy access by the user.